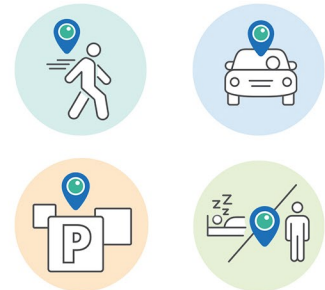


JedAI SDK - The First On-Handset AI Engine



JedAI is the first on-handset AI engine, designed to provide app developers real-time location and contextual status information for their users, with ultra-low battery consumption and maximum privacy management.

Turning Mobility into Utility



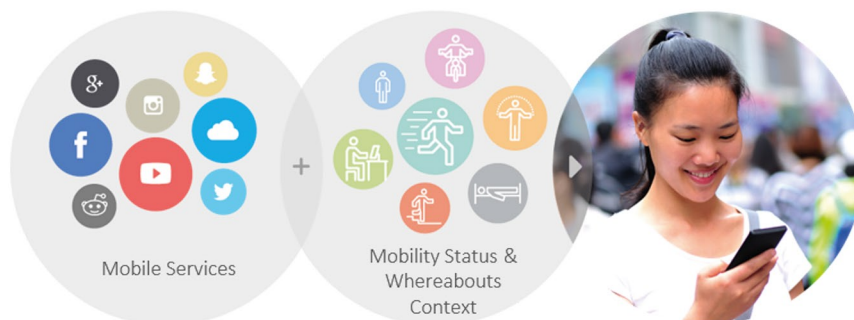
JedAI SDK enables app developers to create new services and automatically start / stop existing services, based on the real-time understanding of the user's mobility status and whereabouts.

Low-Power Analysis of On-Board Sensors



By analyzing signals from the multiple sensors that exist in smartphones, Anagog can understand the real-time mobility status and location information of smartphone users. This makes it easy to identify consumer behavior and competitive trends.

Engage Your Users at The Right Time in The Right Place

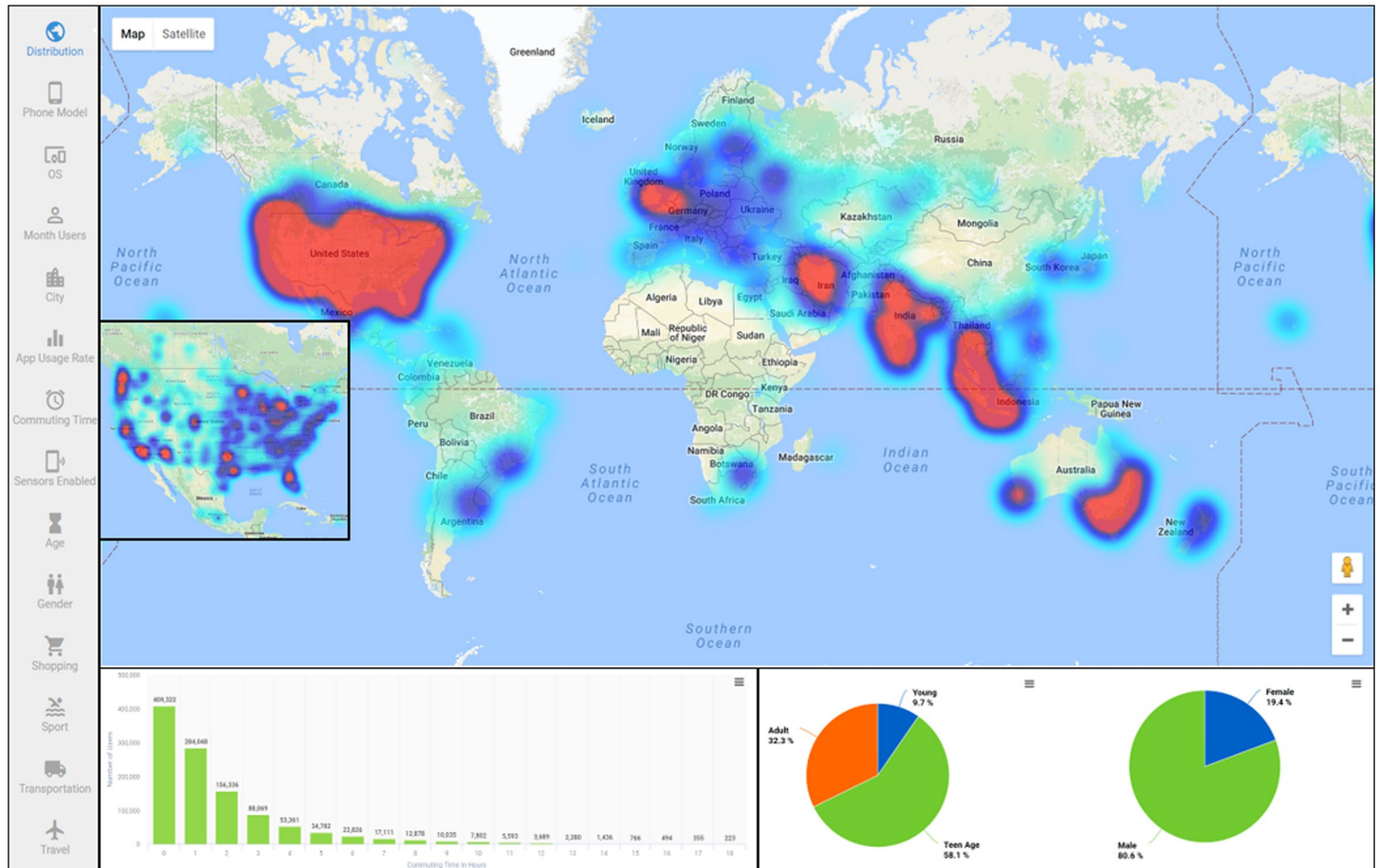


Anagog's JedAI SDK is embedded into millions of smartphones. App developers deliver better and more contextual mobile app experience for their end users, achieving higher user engagement.

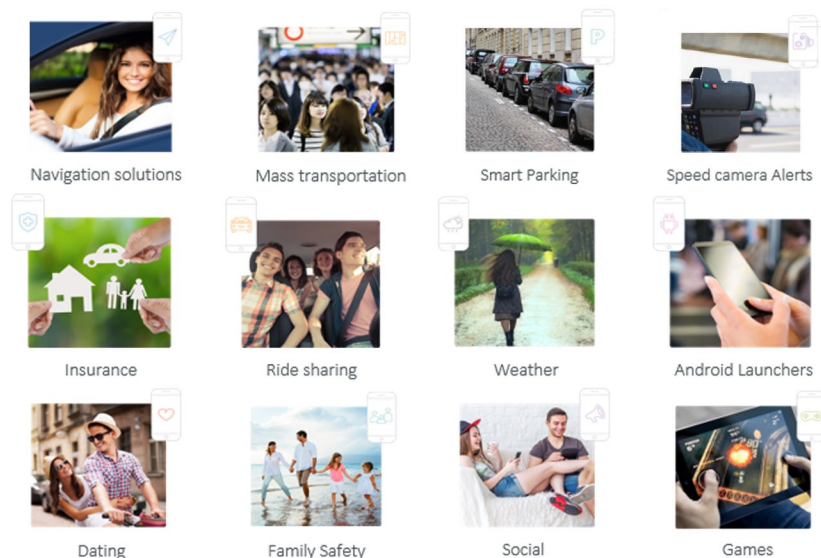
Get JedAI SDK for Free Today!

- Improve your users' experience
- Create new exciting apps and features
- Increase your monetization opportunities
- Get insightful analytics about your app users

Advanced Developer Web Console with Numerous Insightful Analytics



Powerful Addition to Any App Domain



Award-Winning Mobility Status Technology



Best Startup Pitch



Best Mobile Innovation for Automotive



Best Location Intelligence



Enabling Technology Leadership Award